

home directory

- The home directory is located at /home/your_login_name
- The home dir has a maximum size of **200 Gigabyte** and a file number limit of **2 mio files**.
- The home has a snapshot over the **last 14 days**.
- The snapshot data are located at \$HOME/.snapshot
- The home dir is available on all CPU-, GPU- and interactive node.

Please use Your home dir only for basic work - not for saving huge amount of data!

scratch directory

- The scratch directory is located at /scratch/your_login_name
- The scratch dir has a maximum size of **2 Terabyte** and a file number limit of **2 mio files**.
- The scratch dir is NOT included in a backup!
- The scratch dir is available on all CPU-, GPU- and interactive node.

Please use Your scratch dir for Your data during job runtime and pre/post processing.

archive directory

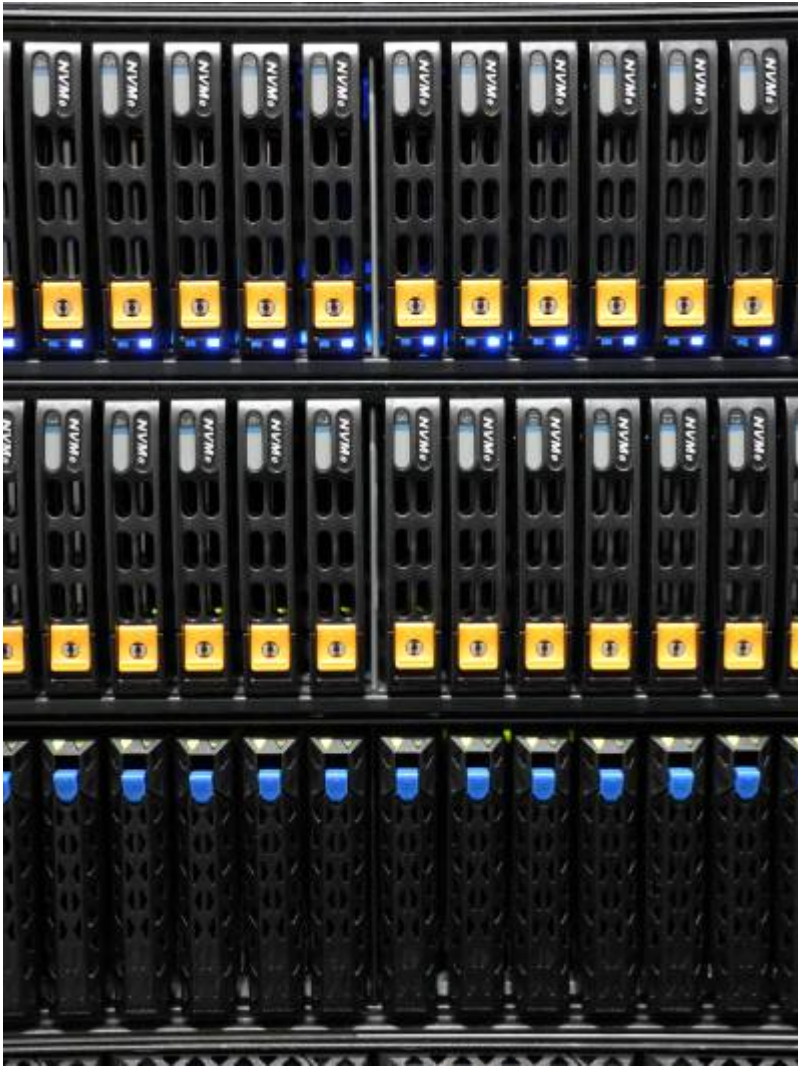
- The archive directory is located at /data2/hpcuser/your_login_name
- The archive dir has a default size of **100 Gigabyte** and a file number limit of **200.000 files**.
- The archive dir is included in the central backup (weekly incremental)!
- The archive dir is available only at the **transfer nodes**.

Please use Your archive dir for saving representative data weekly or monthly.

We recommend to setup Your archive together with meta data files.

Please contact our data steward [Data Steward](#) to this topic.

Please contact hpc@tu-ilmenau.de for more details and questions.



From:
<https://www1.tu-ilmenau.de/hpcwiki/> - hpcwiki

Permanent link:
<https://www1.tu-ilmenau.de/hpcwiki/doku.php?id=filesystem&rev=1734529776>

Last update: **2024/12/18 14:49**

