

home directory

- The home directory is located at /home/your_login_name
- The home directory is a „per user“ directory
- The home dir has a maximum size of **200 Gigabyte** and a file number limit of **2 mio files**.
- The home is excluded from backup service but has a snapshot over the **last 14 days**.
The snapshot data are located at \$HOME/.snapshot
- The home dir is available (read & write) on all CPU-, GPU- and interactive node.

Please use Your home dir only for basic work - not for saving huge amount of data!
Dont go over the above limit - check Your limits frequently with show_user_info.

scratch directory

- The scratch directory is located at /scratch/your_login_name#
- The scratch directory is a „per user“ directory.
- The sratch directory is for temporaray data.
- The scratch dir has a maximum size of **5 Terabyte** and a file number limit of **2 mio files**.
- The scratch dir is NOT included in a backup!
- The scratch dir is available (read & write) on all CPU-, GPU- and interactive node.

Please use Your scratch dir for Your data generated during job runtime and pre/post processing.
Dont use this scratch dir for long term storage of any data!
This scratch dir is designed for high **IOPS** performance

project (group) directory

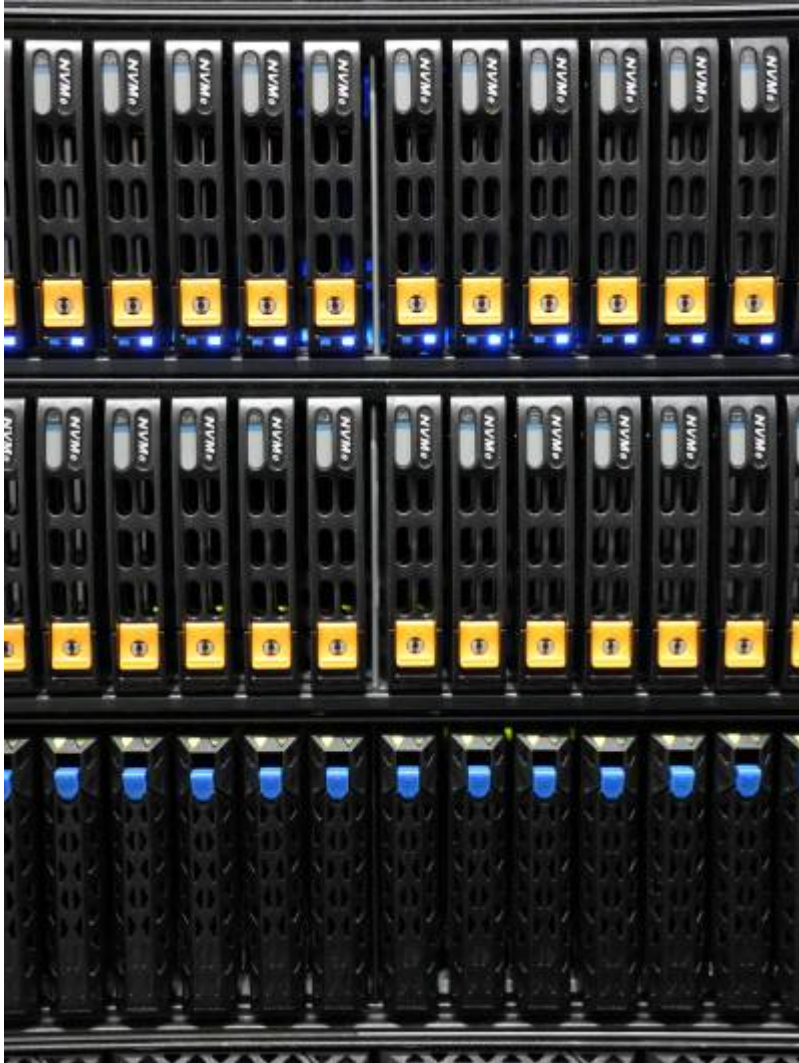
- The project directory is located at /project/your_group_name
- The project directory is a „per group“ directory
- The project dir has a maximum size of **1 Terabyte** and a file number limit of **2 mio files**.
- The project dir is NOT included in a backup!
- The project dir is available
 - a) readonly on all CPU- and GPU- nodes
 - and
 - b) read/writable on Login- and interactive nodes.

archive directory

- The archive directory is located at /data2/hpcuser/your_login_name
- The archiv directory is a „per user“ directory
- The archive dir has a default size of **100 Gigabyte** and a file number limit of **200.000 files**.
- The archive dir is included in the central backup (weekly incremental)!
- The archive dir is available (read & write) only at the **transfer nodes!**

Please use Your archive dir for saving representative data weekly or monthly.
We recommend to setup Your archive file as a tar or zip file together with meta data description files.
Please contact our data steward [Data Steward](#) to this topic.
You can also save code or other data at our [Gitlab Service](#) or in our [NextCloud Service](#)

Please contact hpc@tu-ilmenau.de for more details and questions.



From:
<https://www1.tu-ilmenau.de/hpcwiki/> - hpcwiki

Permanent link:
<https://www1.tu-ilmenau.de/hpcwiki/doku.php?id=filesystem&rev=1762946423>

Last update: **2025/11/12 12:20**

